



# Customized Enclosures

Pls contact [logstrup@unitconcept.com](mailto:logstrup@unitconcept.com) for more details and pricing

**Logstrup**

## Customized Enclosures



Logstrup can provide a full customisation of customer specifications in painted or stainless steel.

By the use of the latest 3-D technology for drafting and modelling, the design departments in Denmark and Ireland takes a project from the concept stage to 3-D model, prototype and full production in a short period of time.

Full CAD-CAM links to punching and bending work centres ensures fast reliable production of prototypes and volume production.

# Stainless Steel Enclosures



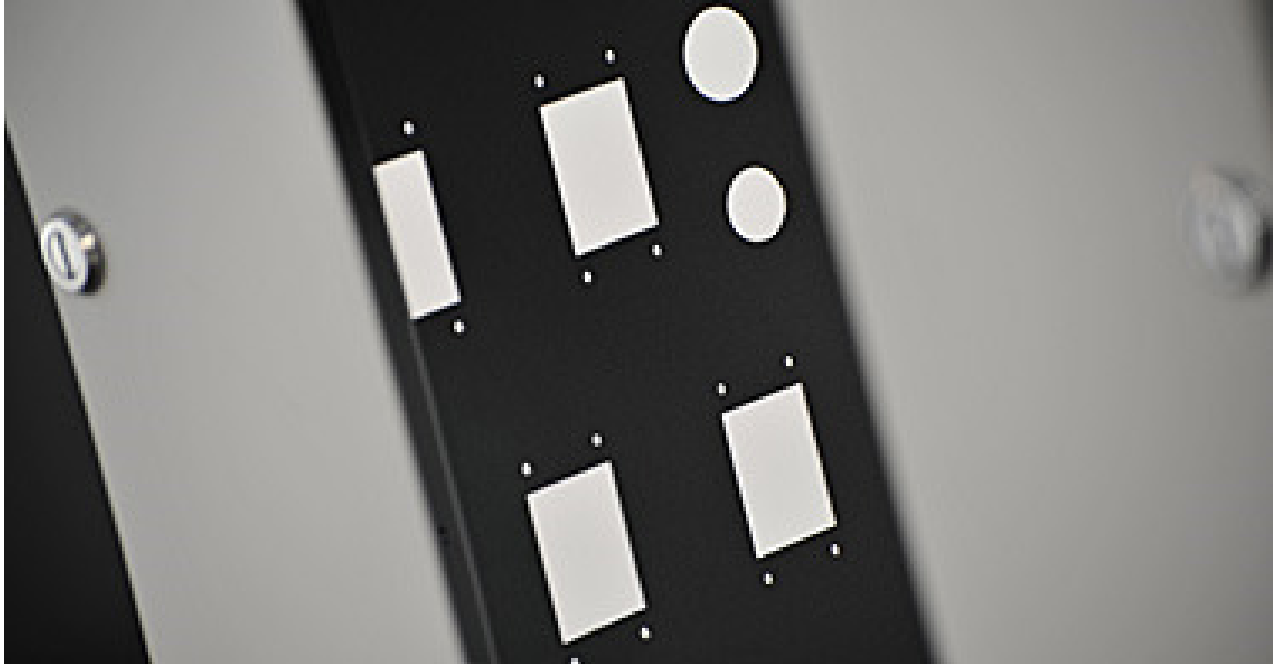
Logstrup is also a specialist manufacturer of stainless steel enclosures with over 40 years experience.

With specialist design and manufacturing centres in Denmark and Ireland the company can supply according to customers specifications or alternatively provide a full design service from concept generation through to prototyping and full production.

Using the latest 3-D technology the design office generate full 3-D models of all enclosures for approval and can also provide animation of assembly in order to provide the client with the most realistic views of the finished product.

On approval all drawings are downloaded through a CAD/CAM link to the punching and bending centres. This ensures optimum quality and reduces the risk of human error.

## Customized Cutouts



Customization of door and plate cutouts is available as an option on all projects. Through the use of standard templates and fully automated punching and bending this service offers high accuracy and fast delivery saving time in the workshop.

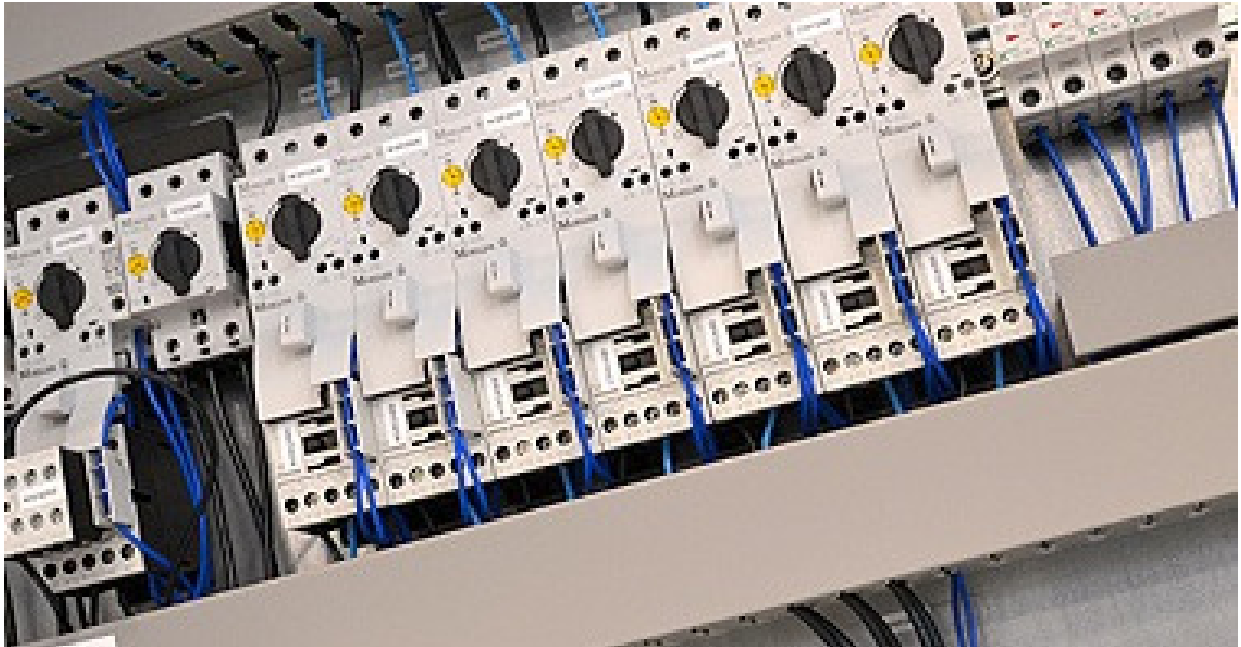
## Customized Paint Finish



Special external and internal paint finishes are available as an option.

The Logstrup standard colour is RAL 7035 fine structure.

## Customization Solutions



Most manufacturing and building services today require some degree of automatic monitoring and control.

Complete process panels, utilising the latest technology in PLC control and recording, may be supplied along with console units and heavy duty electronic racking. Large computer systems require extensive networks. The associated cabling is facilitated through the use of patch panels.

All electrical equipment emits electro-magnetic pulses (EMP) and are also susceptible to radio frequency interference (RFI) due to the increasing use of low voltage low current applications. To solve this problem all electrical equipment may be built in specially shielded panels