

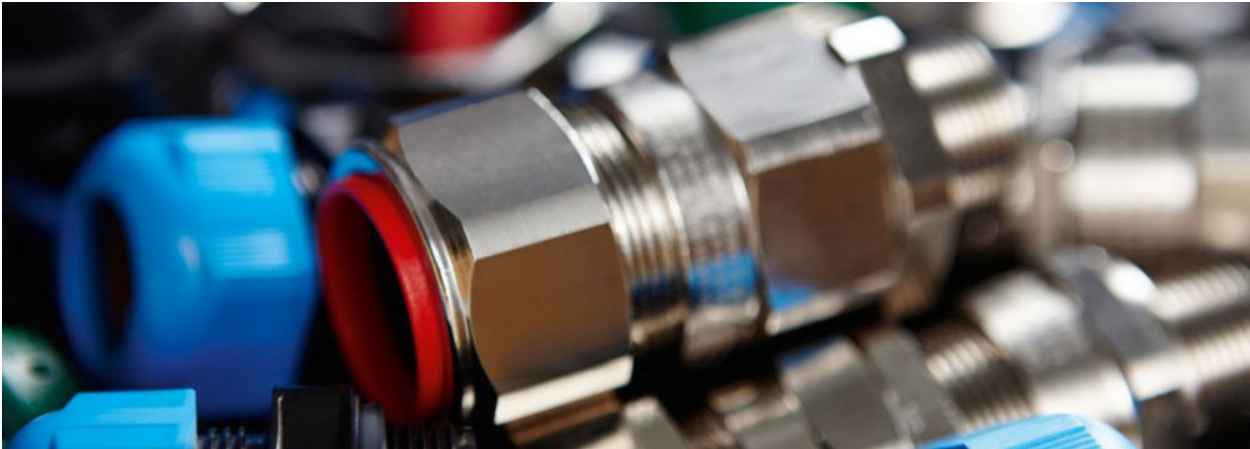


# Cable Glands, Components and Enclosures

Pls contact [Stahl@unitconcept.com](mailto:Stahl@unitconcept.com) for more details and pricing



# Cable Glands, Components and Enclosures



Cable Glands

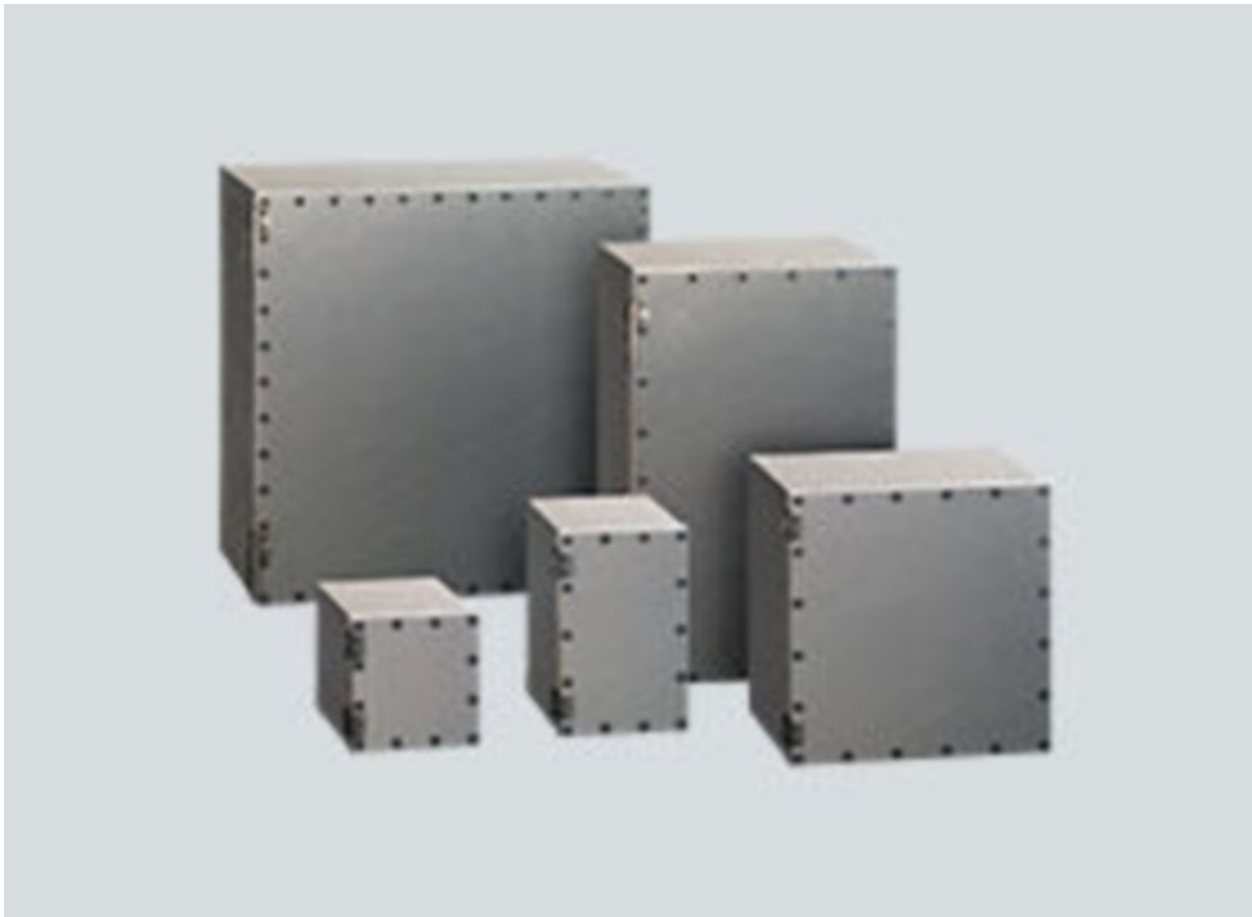


The design and integrated functions of R. STAHL's cable glands make them ideal for protecting people and systems in hazardous areas.

Cable glands may be small, but they play an important role in electrical wiring: They ensure that cables are securely connected and that there are no gaps between cables and the enclosure. This protects the installed components from mechanical stress and damaging environmental conditions. R. STAHL's cable glands provide strain relief and prevent the ingress of water when you route cables into junction boxes, distribution boards, switch cabinets, etc.

- Various types of protection with international certification in accordance with ATEX, IECEx, TR CU, NEC and Inmetro
- Suitable for use in any type of enclosure or device
- Protection against mechanical stress and environmental conditions

## Empty Enclosures



R. STAHL manufactures empty enclosures for Ex e, Ex d and Ex p types of protection. By offering these products in a selection of different sizes and materials, the range of options

available to you is huge – whatever your requirements, you are sure to find the perfect solution. Sophisticated design and cutting-edge production processes ensure that all our Ex enclosures offer lasting protection.

R. STAHL's explosion-protected empty enclosures provide reliable protection in any situation. They are designed for Ex e and Ex d types of protection and are available in a variety of materials: Aluminium, sheet steel, stainless steel and glass-fibre-reinforced polyester resin. It goes without saying that all the enclosures come in a choice of different sizes. This means that you can find the right enclosure for any situation. Thanks to their sophisticated design, you can be sure that our Ex enclosures will last the course.

- Empty enclosures for Ex e, Ex d and Ex p types of protection
- Materials, Aluminium, sheet steel, stainless steel or plastic (glass-fibre-reinforced polyester resin)
- Sophisticated design using high-quality materials

## Components for Ex-d and Ex-e Solutions



R. STAHL offers a wide variety of explosion-protected electrical components for installing in Ex e enclosures. These components are designed and manufactured in Germany in accordance with the latest standards and directives. High-quality materials that can withstand extreme stresses make them durable. Not only this, but we have designed these components with ease of installation and low maintenance requirements in mind, which means the amount of work you need to carry out is much reduced.

R. STAHL's specialists in Germany are hard at work developing and improving our comprehensive portfolio of components for installing in Ex e enclosures. These components comply with the latest standards and directives and can be used worldwide thanks to their international certification. Our sophisticated design reduces the amount of installation work involved and minimises the maintenance requirements later on. Our components are made from high-quality materials and can withstand extreme stresses.

Our range includes:

- Microswitches and position switches
- Actuators
- Ammeters/Voltmeters
- Barriers
- Busbar Systems
- Circuit Breaker
- Contactor
- Control Devices
- Enclosure Heater
- Fuses
- Motor Protection
- Power Supply
- Relay
- Surge Arrestor
- Switches
- Transformer
- Contact Element
- Accessories

Features:

- Explosion-protected electrical components for installing in Ex e enclosures
- Easy to install, low-maintenance and capable of withstanding extreme stresses
- International certification for use the world over